

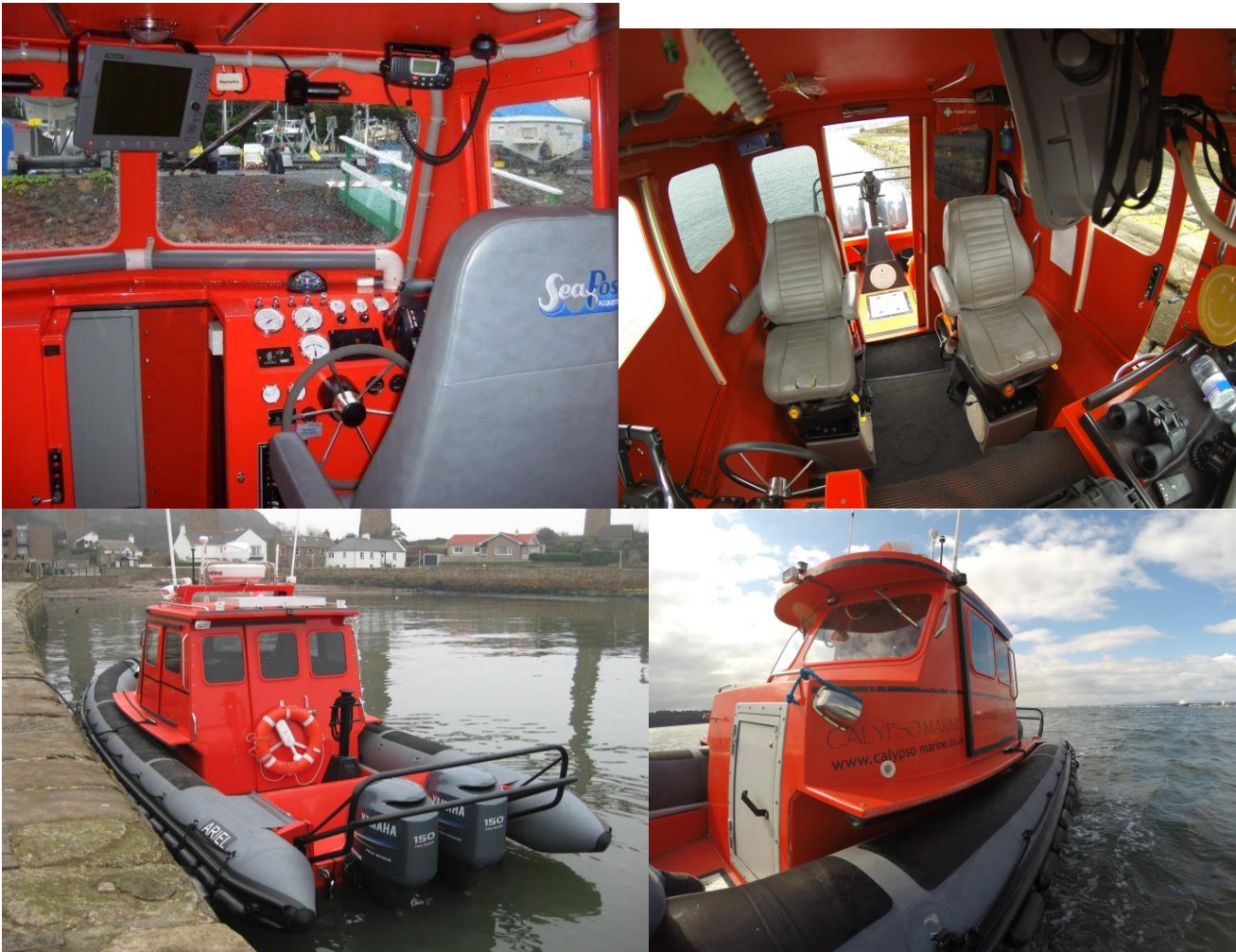


Technical Specification	
Model	Rosborough Cabin RIB
Weight / Dimensions	Length: 7.9mtr Breadth: 2.8mtr Height: 2.5mtr Draft 1mtr
Engines:	Qty 2
Manufacturer	Yamaha
Power Output	150 Horse power each
Fuel Capacity	500 Litres
Cruise Speed	22 Knots
Max Speed	34 Knots
Seating Capacity	2, max capacity 6
Certification	Cat D waters
Equipment:	Heater, tow post
Radio	VHF
Navigation	GPS, Chart Plotter, Colour Depth Sounder, Radar
Configurations / Application:	24 hour safety boat
	Standby / Escort boat

Calypso Marine Ltd
 Old Curing Shed
 Lammerlaws
 Burntisland
 Fife
 KY3 9BS

info@calypsomarine.co.uk
 Stewart Taylor – 07752 156 733

Vat Registration: 699790251
 Company Number: SC384019



Calypso Marine Ltd
Old Curing Shed
Lammerlaws
Burntisland
Fife
KY3 9BS

info@calypso-marine.co.uk
Stewart Taylor – 07752 156 733

Vat Registration: 699790251
Company Number: SC384019